



Stormwater Management in San Mateo County

**Matthew Fabry, P.E.
Manager**

San Mateo Countywide Water
Pollution Prevention Program



**Bay Area One Water Network
Stormwater Workshop
July 25-26, 2019**

What Is Green Infrastructure?

Parcel-Scale

- Private and Public Projects
- Parcel-scale Management
- Primarily Private Funding via New/Redevelopment

Green Streets



Regional Projects





What Is Green Infrastructure?

Parcel-Scale

- Private and Public Projects
- Parcel-scale Management
- Primarily Private Funding via New/Redevelopment

Green Streets

- Street Projects
- Block-Scale Stormwater Management
- Primarily Local/State Transportation Funding

Regional Projects









What Is Green Infrastructure?

Parcel-Scale

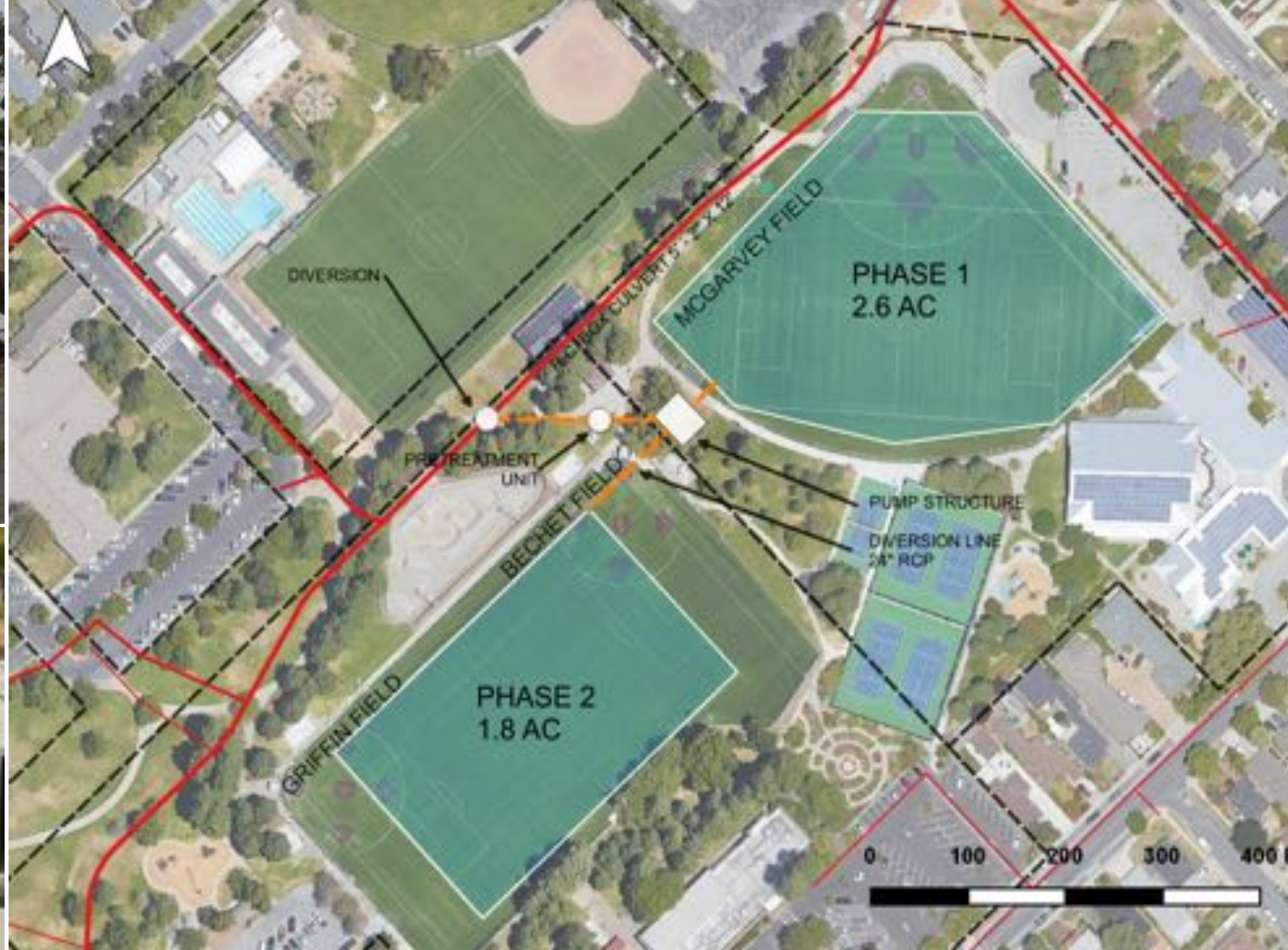
- Private and Public Projects
- Parcel-scale Management
- Primarily Private Funding via New/Redevelopment

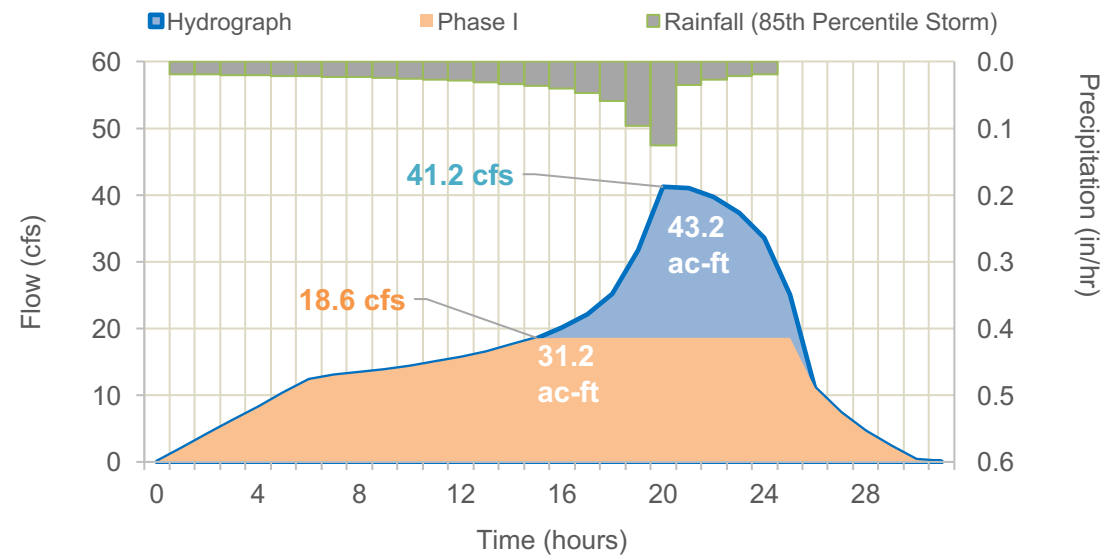
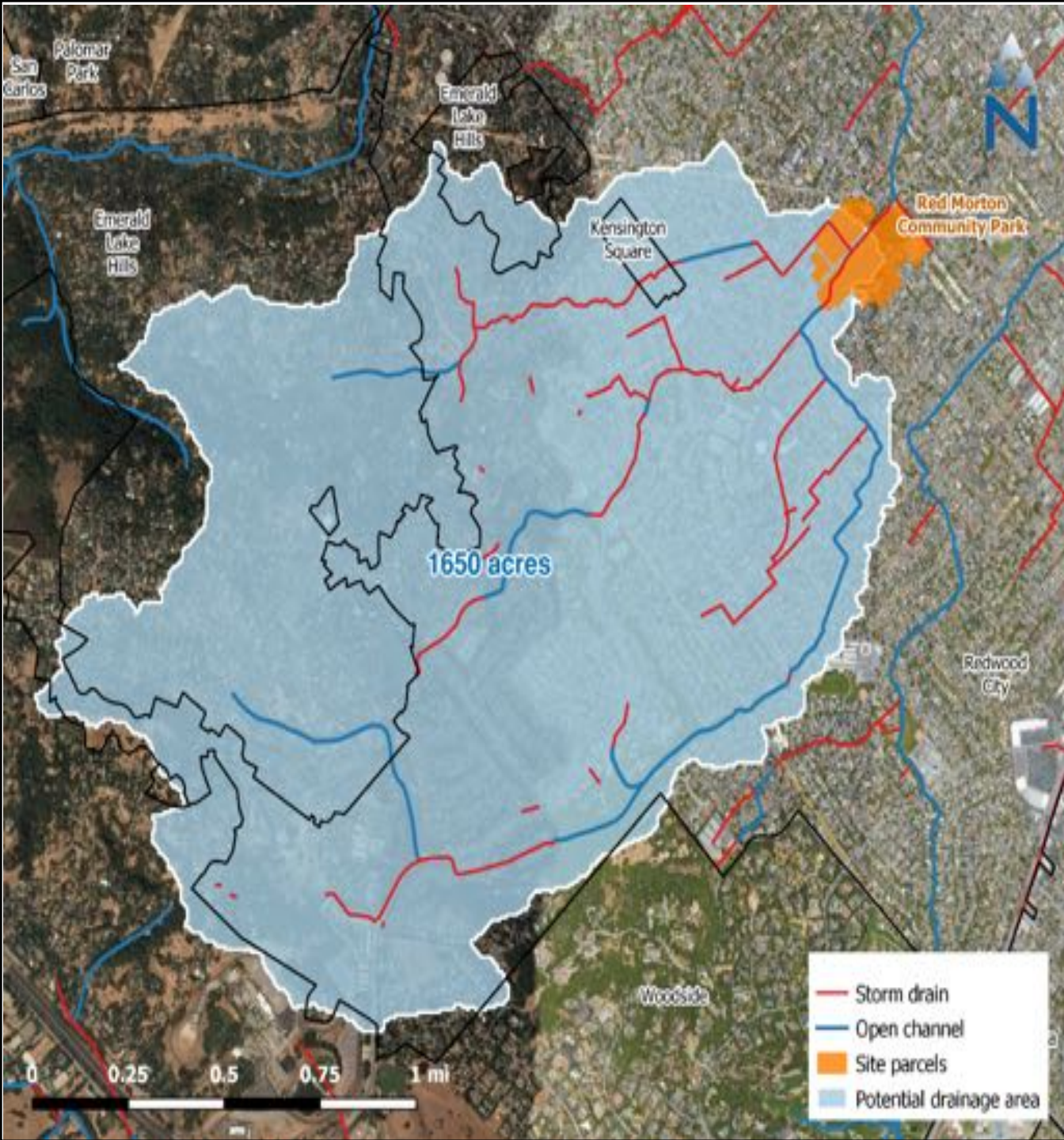
Green Streets

- Street Projects
- Block-Scale Stormwater Management
- Primarily Local/State Transportation Funding

Regional Projects

- Large Retention Projects (Parks, Schools, Large Public Parcels)
- Watershed-scale Management
- Primarily State/Federal Funding

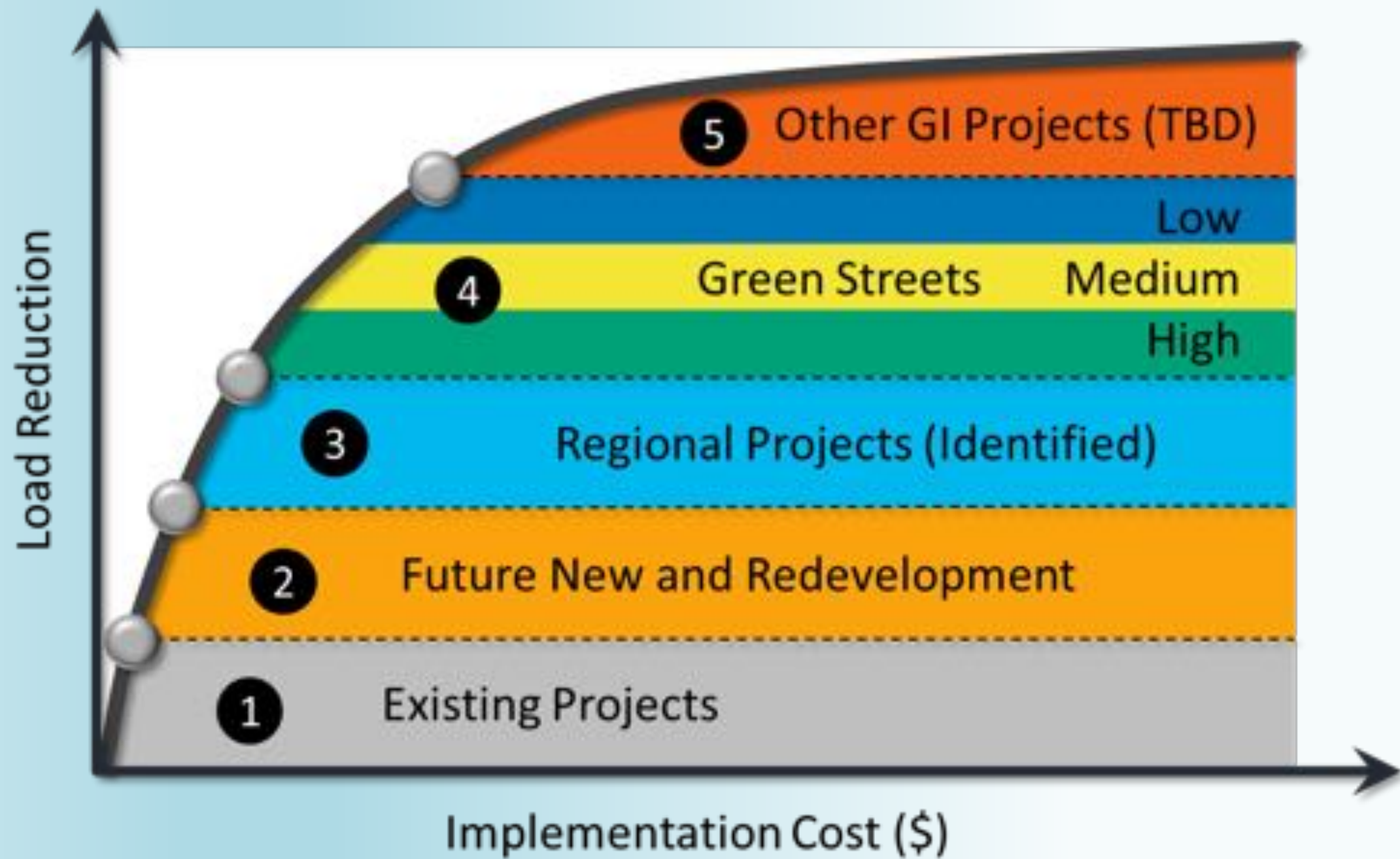




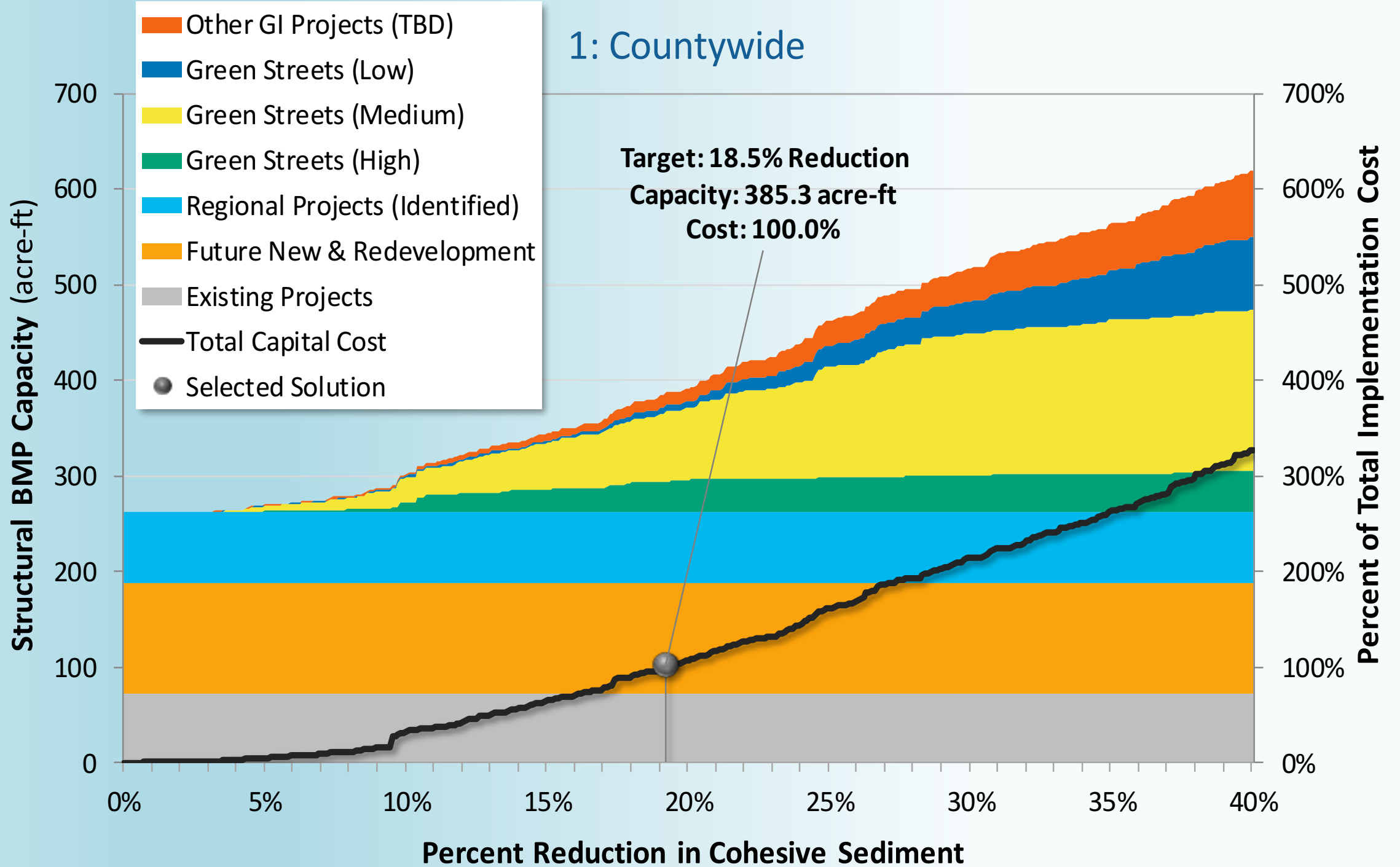
Site Information

Project Lead	Redwood City		
Location	Red Morton Community Park – McGarvey Field		
Land Owner	Redwood City		
Receiving Water	Arroyo Ojo (tributary to Redwood Creek)		

Jurisdiction	Redwood City	San Mateo County	Woodside
Capture Area (acres)	1,142	467	41
Percent of Capture Area	69.2%	28.3%	2.5%



1: Countywide



- South San Francisco
- San Bruno
- Belmont
- Redwood City
- Atherton



Jurisdiction	Drainage Area (acres)	
	Total	Impervious
Unincorporated County	1,340	82
South San Francisco	1,857	1,025
Colma	1,208	337
Pacifica	33	13
Daly City	1,869	964
San Bruno	38	16
Caltrans ROW	234	127
Total:	6,577	2,565


ORANGE MEMORIAL PARK OMP Site

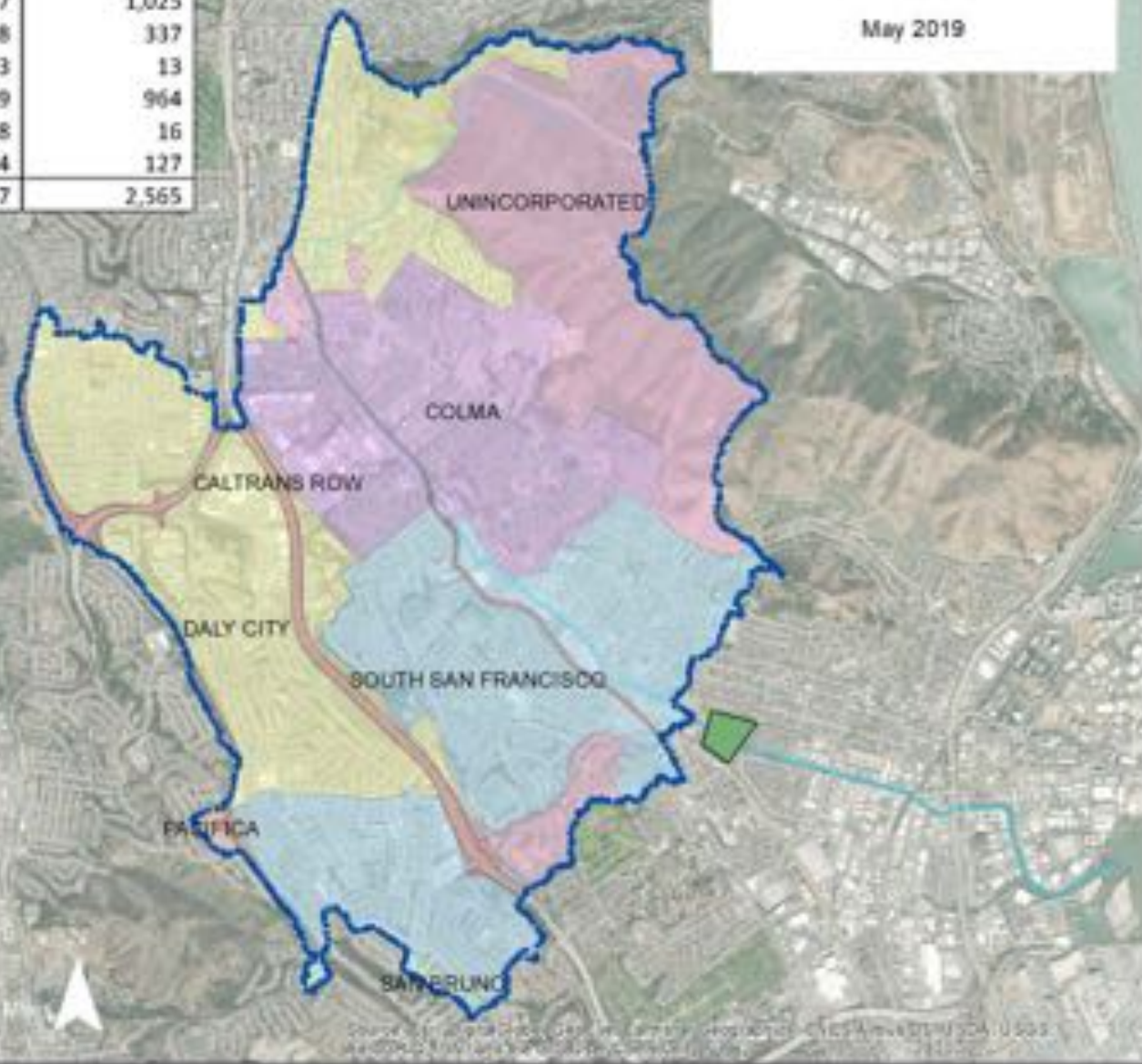
May 2019

Legend

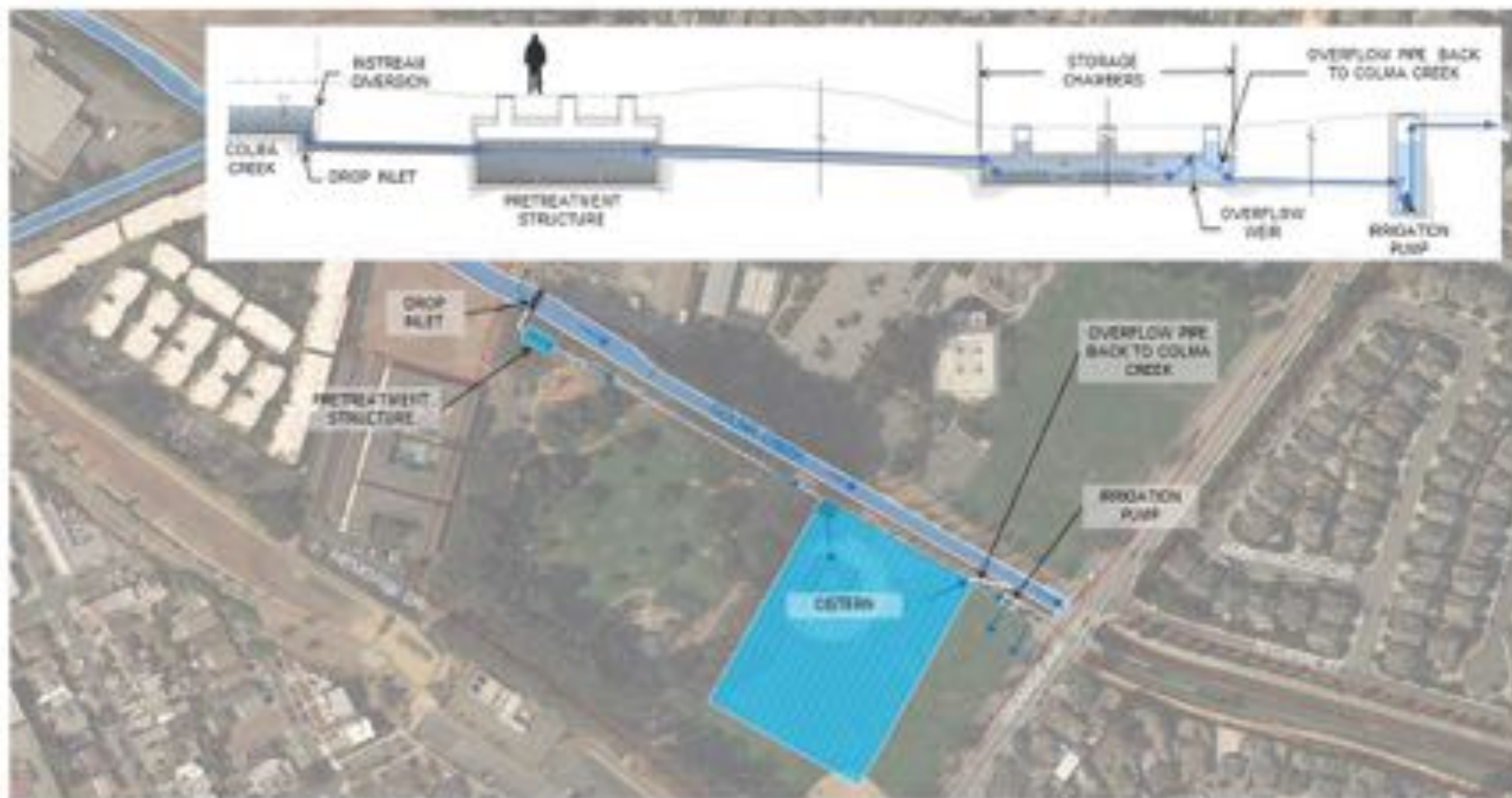
-  OMP Watershed
-  Orange Memorial Park
-  Colma Creek

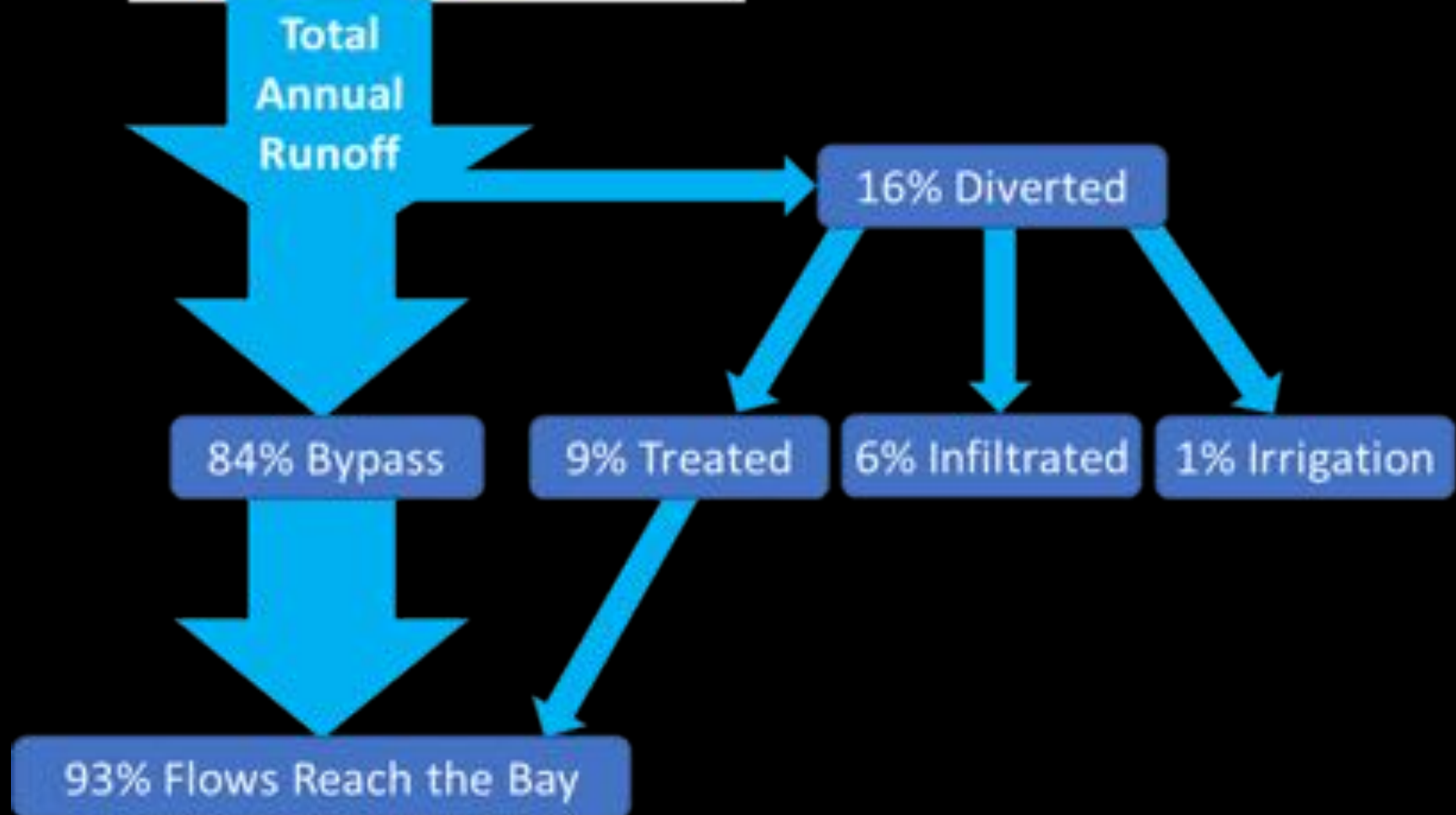
Jurisdiction

-  CALTRANS ROW
-  COLMA
-  DALY CITY
-  PACIFICA
-  SAN BRUNO
-  SOUTH SAN FRANCISCO
-  UNINCORPORATED



Alternative 3: Water Reuse System





Outcomes

- 640 ac-ft diverted, 240 ac-ft infiltrated, 360 ac-ft treated and returned to Colma Creek
- Irrigation of all major turf areas in park
 - 40 ac-ft/yr, saving \$40K/yr in costs
- Water suppliers interested in recharge, concerned with potential water quality
 - Moved >1,000 ft from nearest Cal Water well, shallow infiltration only (< 15' bgs)
 - SFPUC planning more wells, has concerns (“not clean enough for Bay, not clean enough for gw”)



*Matthew Fabry, PE, Manager
(650) 599-1419*

mfabry@smcgov.org

www.flowstobay.org