

Bay Area One Water Network
Workshop on Urban Stormwater



**Augmenting the Bay Area's
Water Supply with Stormwater:
Why Now and Why Here?**


David Sedlak
UC Berkeley
sedlak@berkeley.edu

July 25-26, 2019

One Water for the SF Bay Area



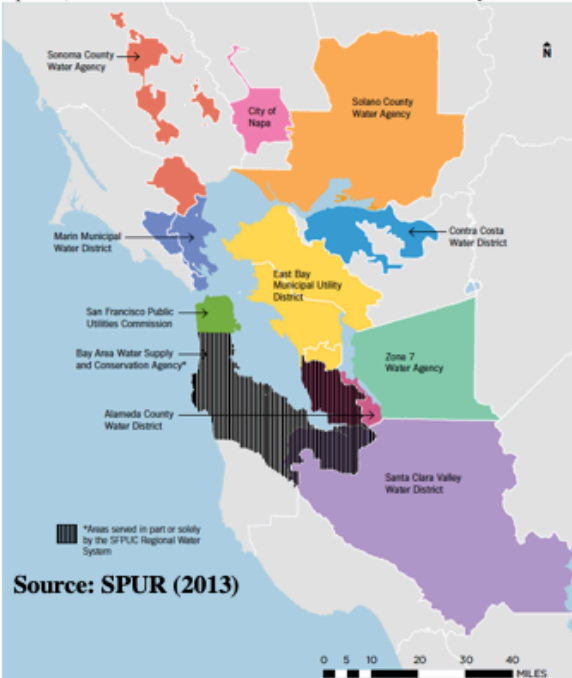
ReNUWIt
Re-inventing the Nation's
URBAN WATER
INFRASTRUCTURE





2016: The Five Taps Summit

April 22, 2016

The Bay Area Voice



Source: SPUR (2013)



- Imported Water
- Local Supplies
- Demand Management
- Water Reuse
- Desalination

Bay Area Leaders Convene Water Summit

Oakland, CA—Today the mayors and city council presidents of the San Francisco Bay Area met to develop a comprehensive strategy for decreasing the region's historic dependence on imported water. The new plan, which the leaders are referring to as the five taps project is supported by the governor and

One Water for the SF Bay Area



ReNUWIt
Re-inventing the Nation's
URBAN WATER
INFRASTRUCTURE



2030: Enhancing Recharge



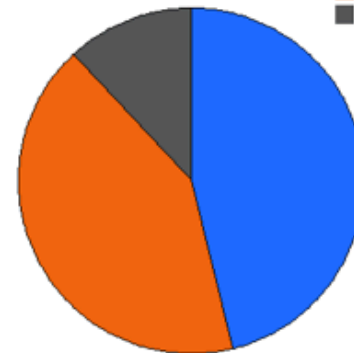
ReNUWIt
Re-inventing the Nation's
URBAN WATER
INFRASTRUCTURE



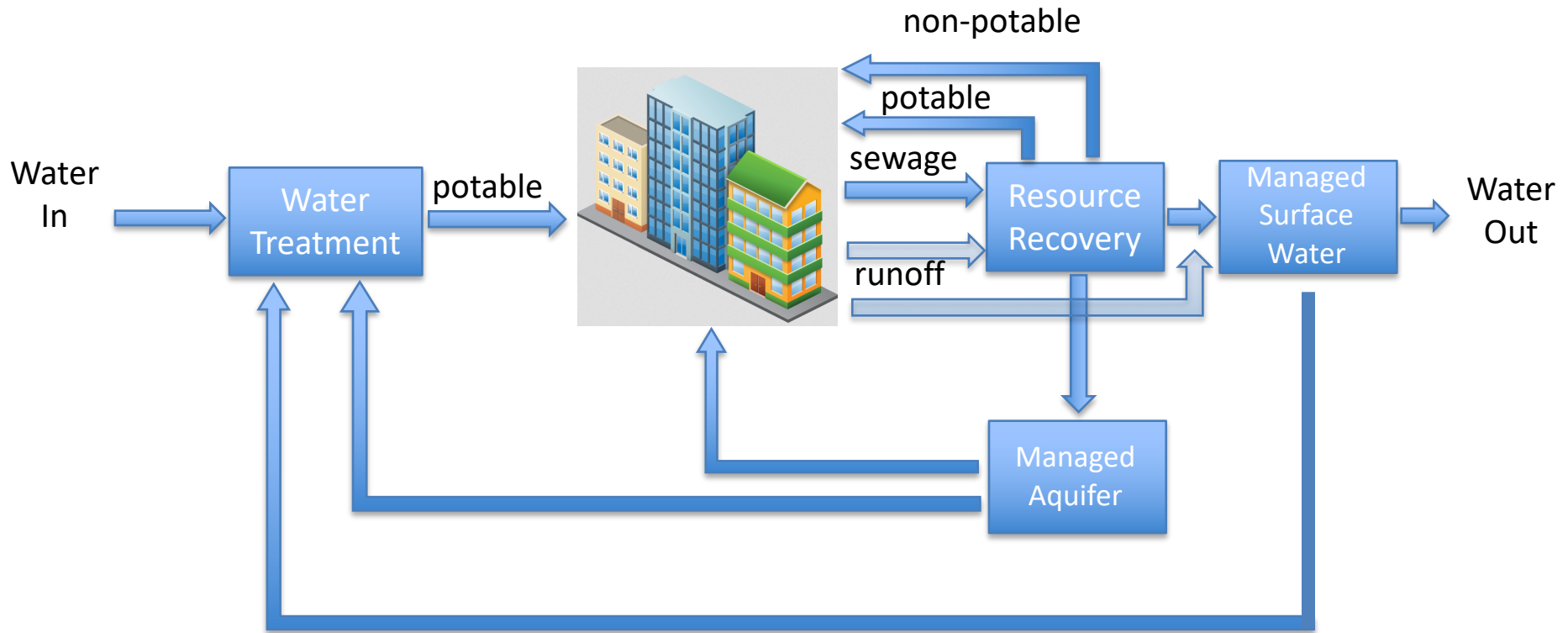
Rory M. Shaw
Wetland Park
(Burbank, CA)



■ Imported
■ Local
■ Reuse



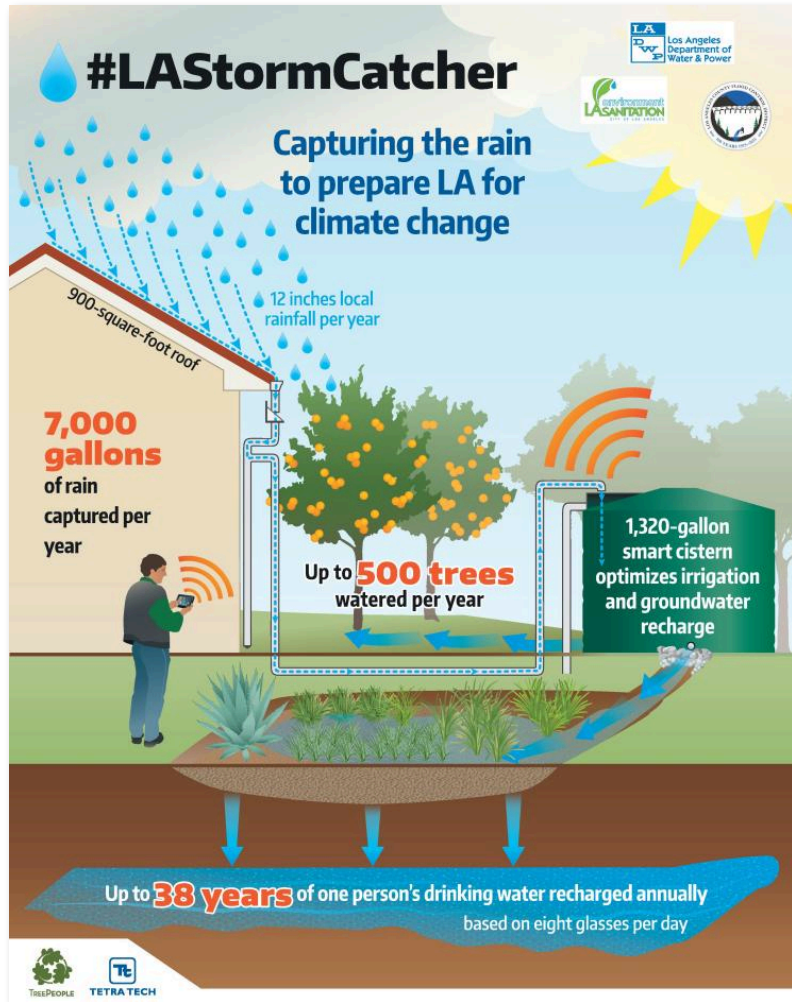
The Logic of Stormwater



The Charm of Stormwater



ReNUWIt
Re-inventing the Nation's
URBAN WATER
INFRASTRUCTURE



LADWP



SFPUC

The Reward of \$tormwater



ReNUWIt
Re-inventing the Nation's
URBAN WATER
INFRASTRUCTURE

Storm Water Continues to be the Largest Funding Need

Storm water capital infrastructure needs total \$775.1 million, making it the largest funding need among General Fund assets. Its funding gap continues to be the largest and continues to grow, totaling over \$700 million. Storm water capital needs comprise of improving storm drain pipes to address flood risks, as well as mitigating runoff to improve water quality of the City's watersheds

Los Angeles Measure W, Nov. 2018

Tax: 2.5 ¢/yr-sq ft impermeable space

Required 67% voter approval

County-wide passage (69.5%)

MEASURE W

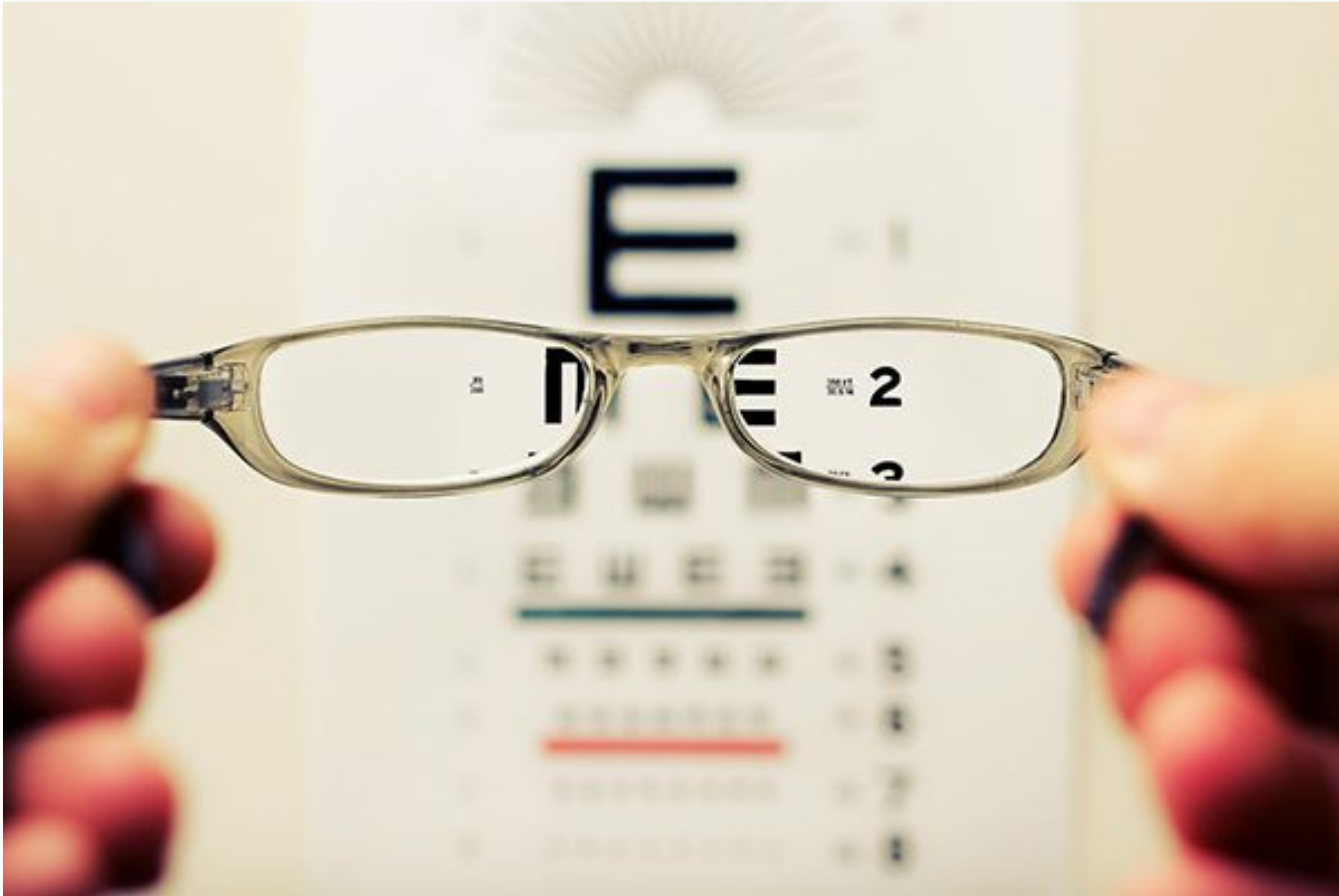
**captures and cleans enough
rain water to meet the
needs of 2.5 million county
residents.**



Seeing the World Clearly



ReNUWIt
Re-inventing the Nation's
URBAN WATER
INFRASTRUCTURE

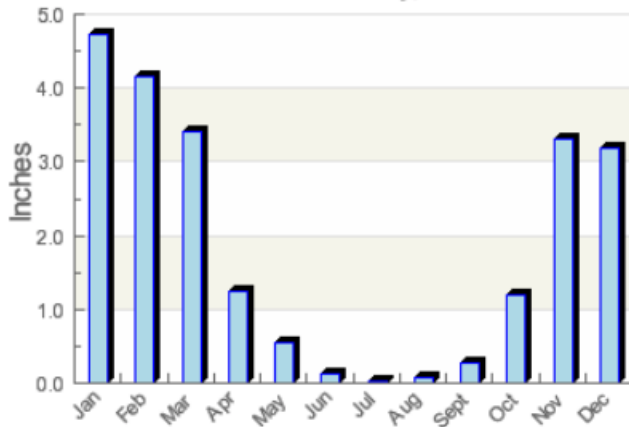


Bay Area-Specific Challenges



ReNUWIT
Re-inventing the Nation's
URBAN WATER
INFRASTRUCTURE

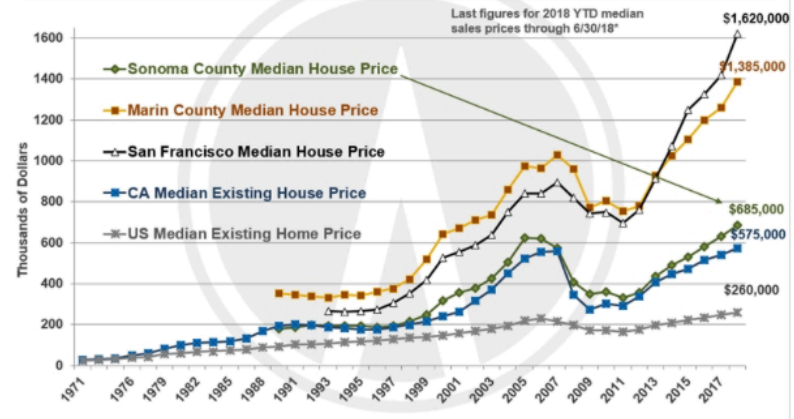
Average Monthly Precipitation
San Francisco County, California



1971-2000

rssWeather.com

Median Home Sales Prices by Year
Sonoma, Marin, San Francisco, California and U.S. Trends



Data from the San Francisco, North Bay, California and National Associations of Realtors: deemed reliable but may contain errors and is subject to revision. All numbers are approximate. *2018 YTD medians for CA and US are estimates.



Mediterranean Hydrology

Expensive Land

Uncooperative Geology



Institutional Challenges



ReNUWIt
Re-inventing the Nation's
URBAN WATER
INFRASTRUCTURE



Stovepipes Are Hard to Break

- Funding Sources
- Institutional Mandates
- Trust and familiarity
- Politics

Stormwater Thesis

Stormwater is a challenging water resource for the Bay Area.

It is worth considering for reasons including:

- Public/political support
- Resources for multi-benefit projects
- Potential resiliency & sustainability

Stormwater Thesis

Stormwater is a challenging water resource for the Bay Area.

It is worth considering for reasons including:

- Public/political support
- Resources for multi-benefit projects
- Potential resiliency & sustainability

Our task:

How significant is the potential over a 30-year horizon?

Which opportunities should be prioritized?

What are the next steps?